



TL-X XL



TL-X XL 40W/33-640 SLV/25

Single-pin low-pressure mercury discharge lamps with a tubular 38 mm envelope

Warnings and Safety

- A lamp breaking is extremely unlikely to have any impact on your health. If a lamp breaks, ventilate the room for 30 minutes and remove the parts, preferably with gloves. Put them in a sealed plastic bag and take it to your local waste facilities for recycling. Do not use a vacuum cleaner.

Product data

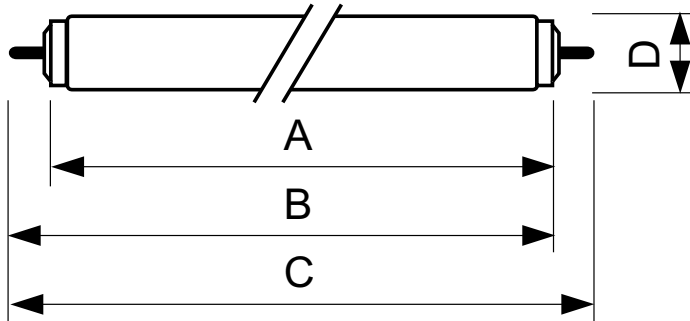
General Information		Lamp current (nom.)		0.430 A	
Cap base	FA6 [FA6]	Voltage (Nom)	103 V		
Life to 10% failures (nom.)	21000 h	Controls and Dimming			
Life to 50% failures (nom.)	26000 h	Dimmable	Yes		
	Sphere	Mechanical and Housing			
Light Technical		Bulb shape	T12 [38 mm (T12)]		
Colour Code	33-640	Approval and Application			
Lamp Luminous Flux 25°C EL (Nom)	2300 lm	Energy Efficiency Class	G		
Colour Designation	Cool White (CW)	Mercury (Hg) content (max.)	12 mg		
Lumen maintenance 10,000 hours (nom.)	0 %	Mercury (Hg) content (nom.)	12.0 mg		
Lumen maintenance 2,000 hours (nom.)	88 %	Energy consumption kWh/1,000 hours	40 kWh		
Lumen maintenance 5,000 hours (nom.)	83 %		423515		
Chromaticity coordinate X (nom.)	0.38	Product Data			
Chromaticity coordinate Y (nom.)	0.38	Full product code	871150026137340		
Colour Temperature, horizontal (Nom)	4000 K	Order product name	TL-X XL 40W/33-640 SLV/25		
Lamp Luminous Efficacy EM (Nom)	58 lm/W	EAN/UPC – product	8711500261373		
Colour Rendering Index,horiz (Nom)	60	Order code	928037903332		
Operating and Electrical					
Power (Rated) (Nom)	40.0 W				

TL-X XL

SAP numerator – quantity per pack	1
Numerator – packs per outer box	25
SAP material	928037903332
SAP net weight (piece)	233.000 g

ILCOS code	FD-40/41/2B-LC/N-Fa6
------------	----------------------

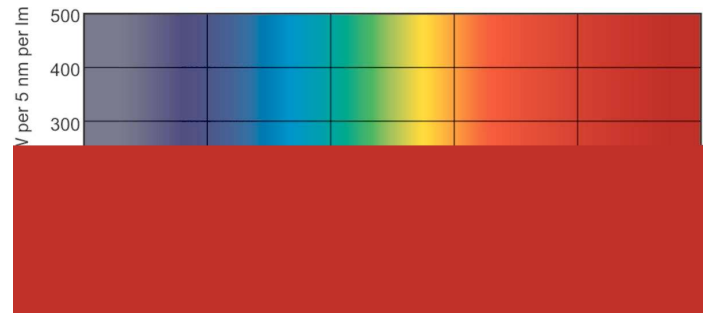
Dimensional drawing



TL-X XL 40W/33-640 SLV/25

Product	D (max)	A (max)	B (max)	B (min)	C (max)
TL-X XL 40W/33-640 SLV/25	40.5 mm	1183.5 mm	1202 mm	1198.5 mm	1220.5 mm

Photometric data



Lightcolour /33-640

Lightcolour /33-640

