



GreenUp Lowbay G2 - A brighter solution for safer workspaces

GreenUp Lowbay G2

Good lighting is essential in industrial workspaces and large indoor areas. The wrong choice of lights or a lighting not correctly planned can lead to eye strain, fatigue, and poor performance, compromising safety and productivity. The Philips GreenUp Lowbay G2 luminaire is a simple LED solution which efficiently illuminates work areas, creating a brighter and better work, retail or sporting environment. With its crisp, white light and high colour rendering index coupled with energy efficiency, high visibility and enhances safety 24/7. Equipped with motion detection function, this easy-to-install and low-maintenance lighting solution is suitable for a variety of applications.

Benefits

- High energy saving up to 73% comparing to HPI-P system.
- Lighting for need, is able to achieve additional 10% energy saving through occupancy and motion-based dimming.
- Comfort light quality
- Easy installation and retrofitting

Features

- High efficacy: 120 lumens per watt
- Provides option of 1-10V motion detection sensor version on 8800lm
- Consistent colour rendering CRI>80 and R9>0
- Micro lens structure to realise the accurate distribution good glare control
- Five choices of optional accessories make it suitable for various applications
- Lifetime of 50,000 hours @L70B50 with end-to-end Philips production quality assurance

GreenUp Lowbay G2

Application

- Industrial workspaces
- Open areas
- Warehouses
- Retail stores
- Stadiums

Versions



BY288P



BY288P LED40

Product details



GreenUp Lowbay G2 BY288P



GreenUp Lowbay G2 BY288P w Reflector



GreenUp Lowbay G2 BY288P Pipe



GreenUp Lowbay G2 BY288P Bracket

GreenUp Lowbay G2

Product details



GreenUp Lowbay G2 BY288P Back



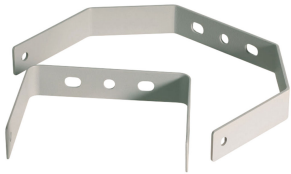
GreenUp Lowbay G2 BY288P Chain



GreenUp Lowbay G2 BY288P LED40



GreenUp Lowbay G2 BY288Z SM P



GreenUp Lowbay G2 Mounting Bracket



GreenUp Lowbay G2 BY288Z Hook

Accessories



BY268Z RL

Ordercode 911401541511,
911401542111

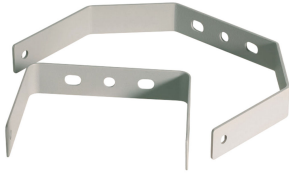


BY268Z SM P

Ordercode 911401541811

GreenUp Lowbay G2

Accessories



BY269Z MB

Ordercode 911401541911,
911401542011



BY218Z Hook

Ordercode 911401561721

Application Conditions

Ambient temperature range	-20 to +45 °C
Suitable for random switching	No

Approval and Application

Mech. impact protection code	IK03
Ingress protection code	IP20

Controls and Dimming

Dimmable	No
----------	----

Operating and Electrical

Input Voltage	220-400 V
---------------	-----------

General Information

CE mark	CE mark
Protection class IEC	Safety class I (I)
Optical cover/lens type	O
Driver included	Yes
ENEC mark	-
Flammability mark	F
Glow-wire test	650/5
Light source replaceable	No
Number of gear units	1 unit
Optic type	No

Initial Performance (IEC Compliant)

Init. Colour rendering index	>80
Luminous flux tolerance	+/-10%

Mechanical and Housing

Colour	Grey
--------	------

Over Time Performance (IEC Compliant)

Median useful life L80B50	40000 h
Median useful life L90B50	20000 h

Initial Performance (IEC Compliant) (1/2)

Order Code	Full Product Name	Initial chromaticity	Init. Corr. Colour Temperature	Initial LED	
				luminaire efficacy	Initial luminous flux
911401842799	BY288P LED90/CW PSU EN	(0.313.0.324)SDCM<5	6500 K	117 lm/W	8800 lm
911401843099	BY288P LED90/NW PSU EN	(0.38.0.38)SDCM<5	4000 K	117 lm/W	8800 lm
911401843399	BY288P LED60/CW PSU EN	(0.313.0.324)SDCM<5	6500 K	118 lm/W	5900 lm
911401843499	BY288P LED60/NW PSU EN	(0.38.0.38)SDCM<5	4000 K	118 lm/W	5900 lm
911401842899	BY288P LED40/CW PSU EN	(0.313.0.324)SDCM<5	6500 K	120 lm/W	3600 lm
911401843199	BY288P LED40/NW PSU EN	(0.38.0.38)SDCM<5	4000 K	120 lm/W	3600 lm

Initial Performance (IEC Compliant) (2/2)

Order Code	Full Product Name	Initial input power	Order Code	Full Product Name	Initial input power
911401842799	BY288P LED90/CW PSU EN	75 W	911401843399	BY288P LED60/CW PSU EN	50 W
911401843099	BY288P LED90/NW PSU EN	75 W	911401843499	BY288P LED60/NW PSU EN	50 W

GreenUp Lowbay G2

Order Code	Full Product Name	Initial input power	Order Code	Full Product Name	Initial input power
911401842899	BY288P LED40/CW PSU EN	30 W	911401843199	BY288P LED40/NW PSU EN	30 W

